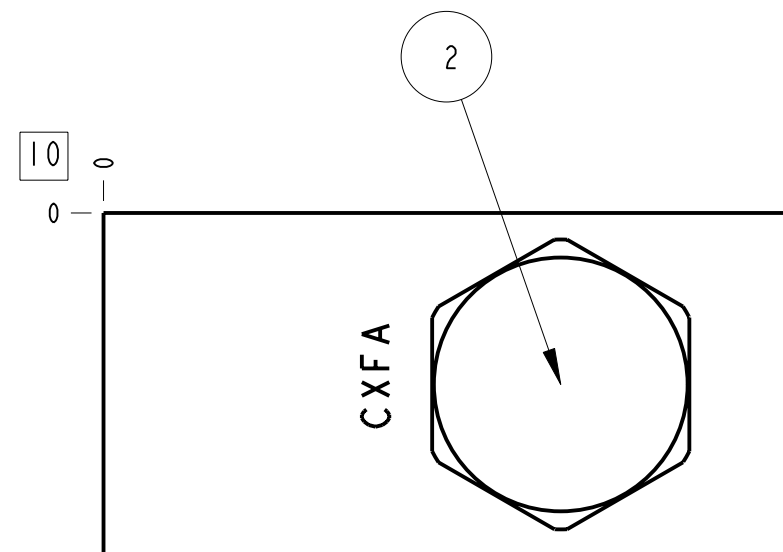
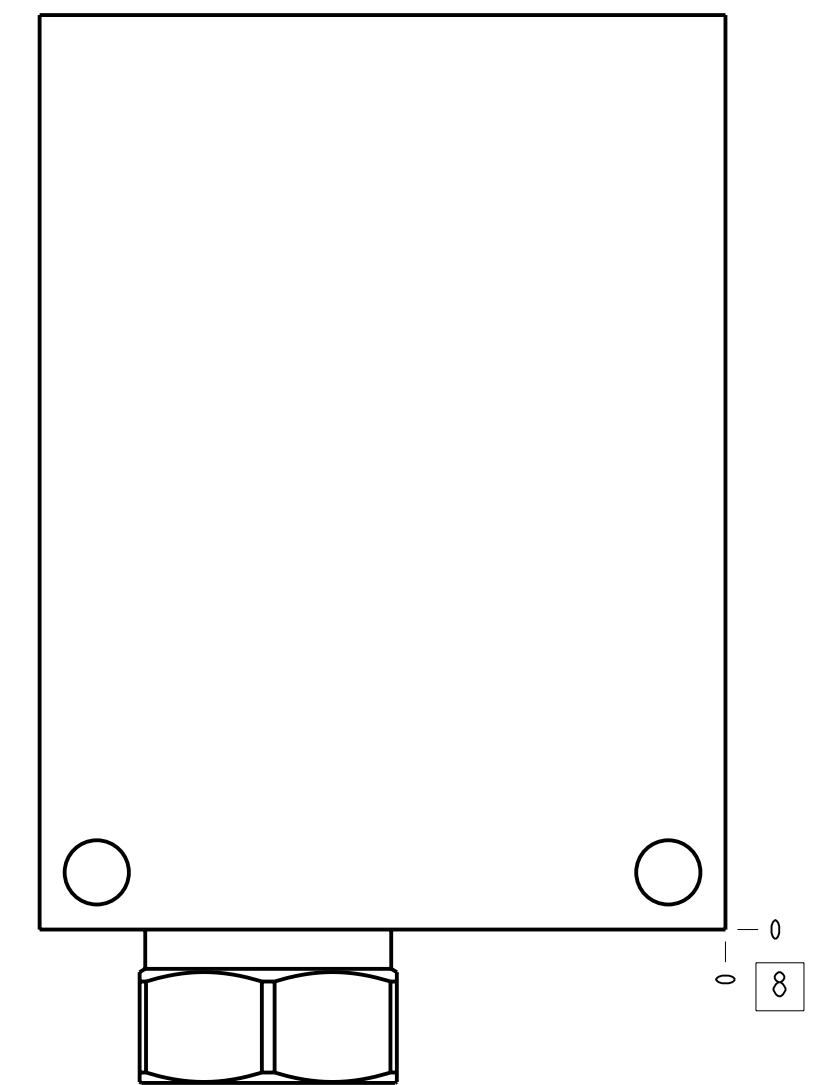
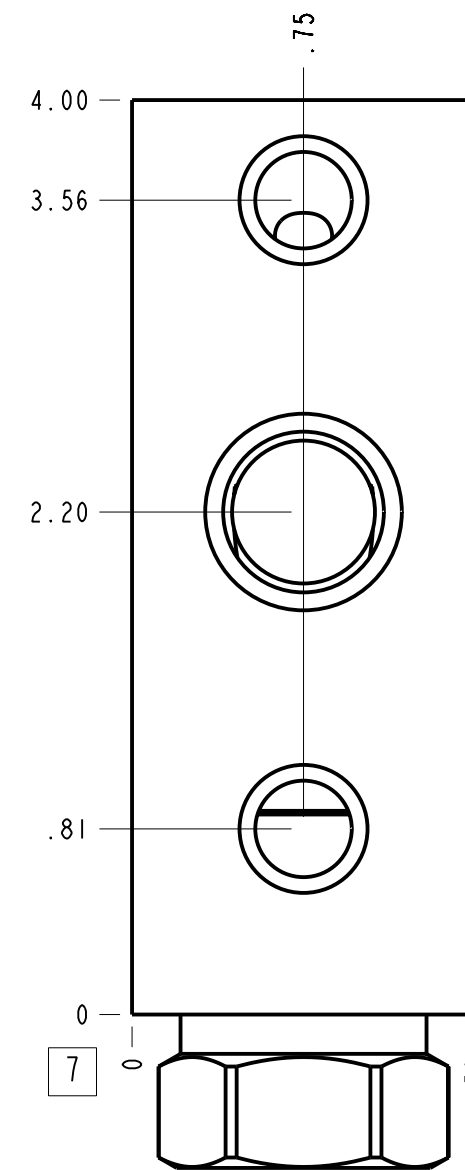
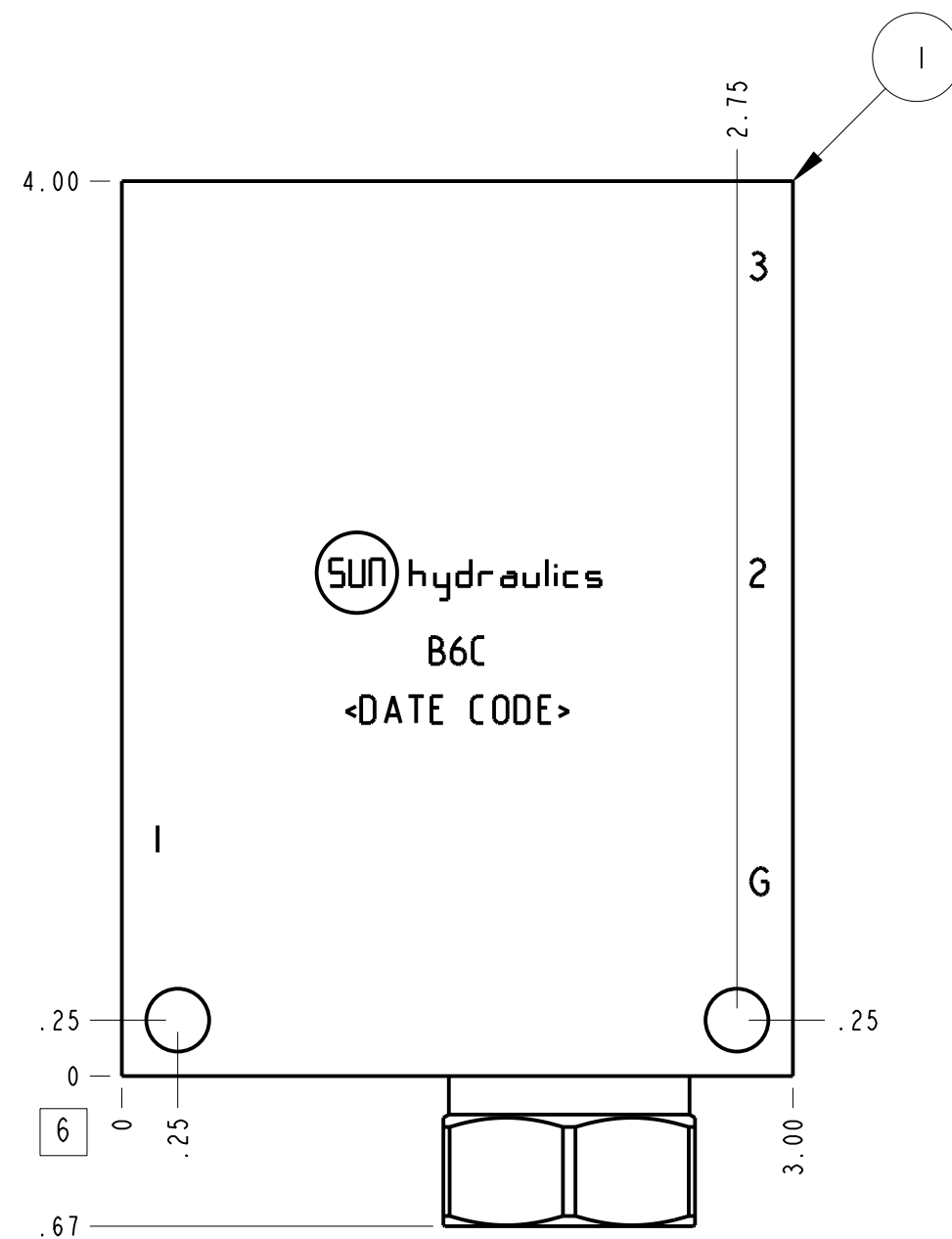
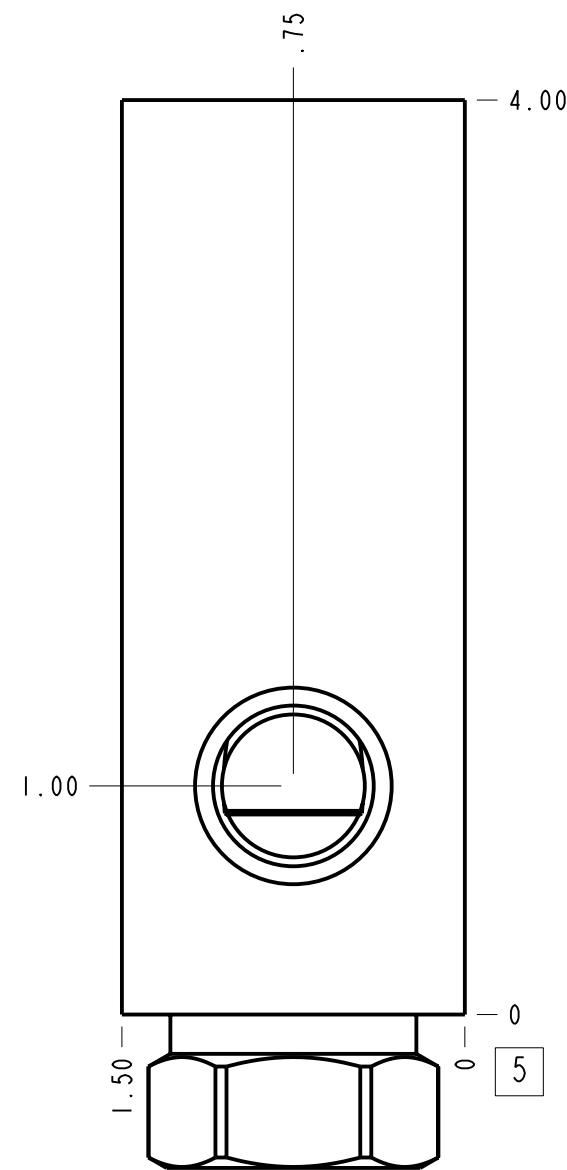
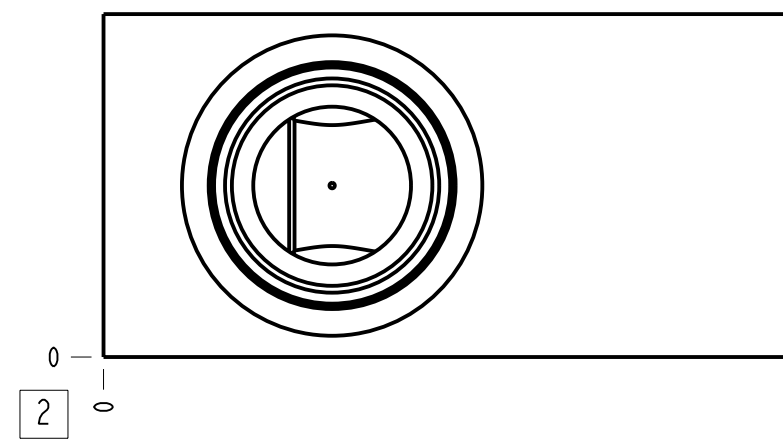


Technical Data	U.S. Units	Metric Units
Cavity	T-2A	
Body Features	Ninety degree with reverse flow check - sequence	
Body Type	Line mount	
Interface	None	
Open Cavity Quantity	1	
Weight	1.683 lb.	0,764 kg.
Mounting Hole Diameter	.28 in.	7,1 mm
Mounting Hole Depth	Through	
Mounting Hole Quantity	2	
Includes integral cartridge(s)	Yes (see Included Components)	



Notes

- Important: Carefully consider the maximum system pressure. The pressure rating of the manifold is dependent on the manifold material, with the port type/size a secondary consideration. Manifolds constructed of aluminum are not rated for pressures higher than 3000 psi (210 bar), regardless of the port type/size specified.
- This drawing is for reference only. It is generated by an automated process and does not fall under Sun's document control process.

Port Headings		
Product	Port	Size
B6C	Ports 1 & 2	1/2" NPTF
B6C	Port 3	1/4" NPTF
B6C	Gage Port	1/4" NPTF

2	CXFA-XCN			CHECK VALVE	1	
1	150-861-003		6061-T6 ALUMINUM	BODY	1	
ITEM	PART NO.	SETTING	MATERIAL	PART NAME	QTY	
	MODEL B6C			ALL DIMENSIONS IN INCH VIEWS ARE THIRD ANGLE	FIRST ANGLE	THIRD ANGLE
DESCRIPTION T-2A Line mount (See Technical Data for Body Features)			DATE Nov-22-24	SCALE 1.191	DWG SIZE C	SHEET 1

