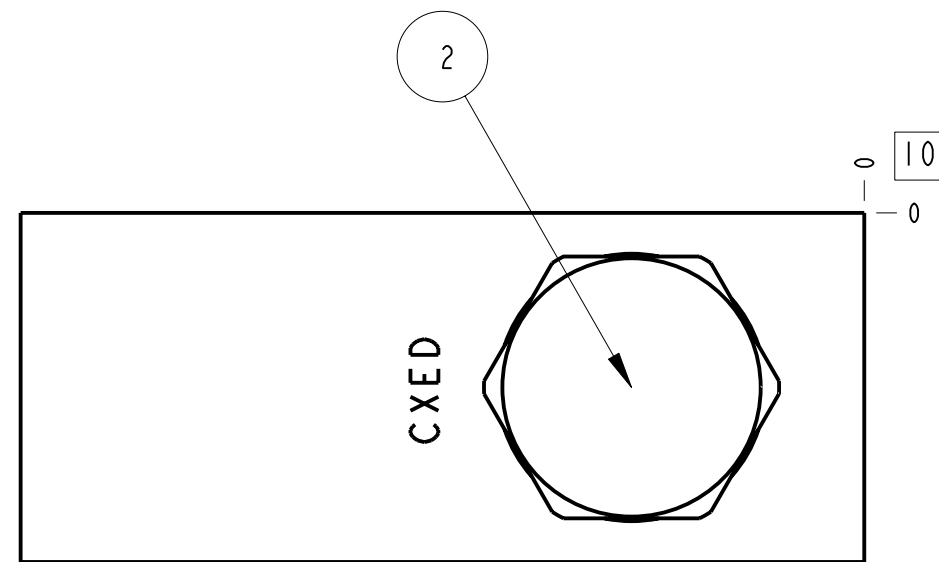
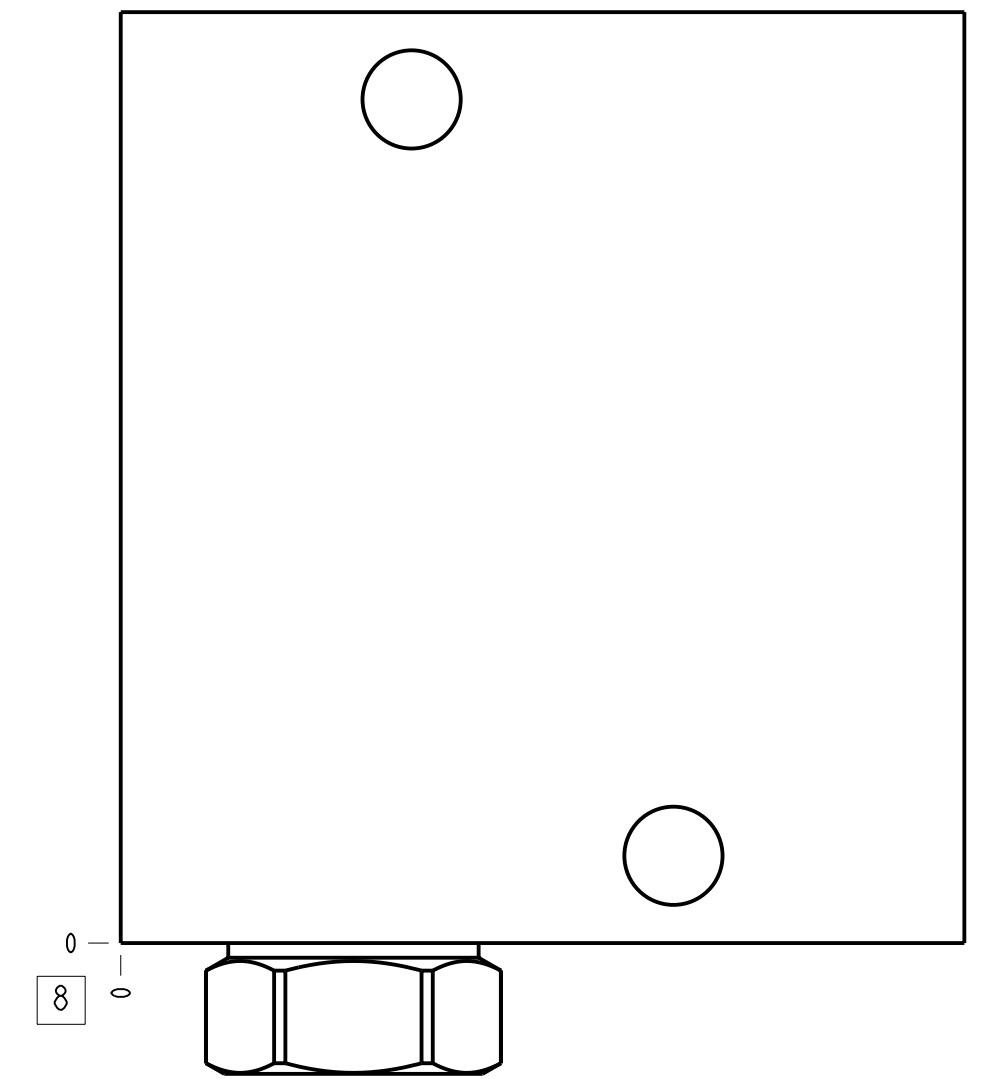
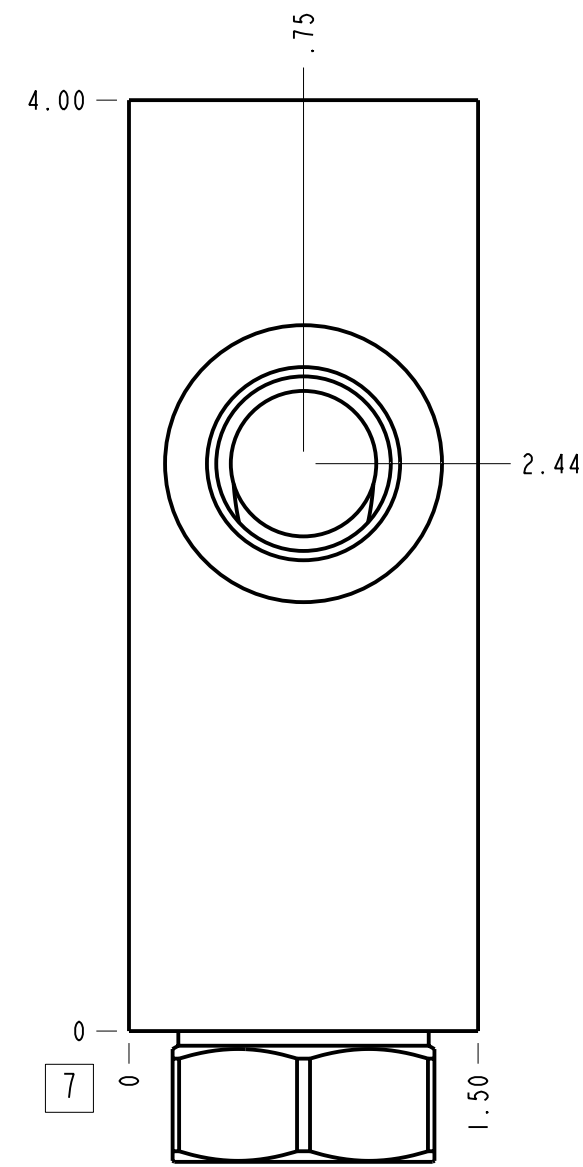
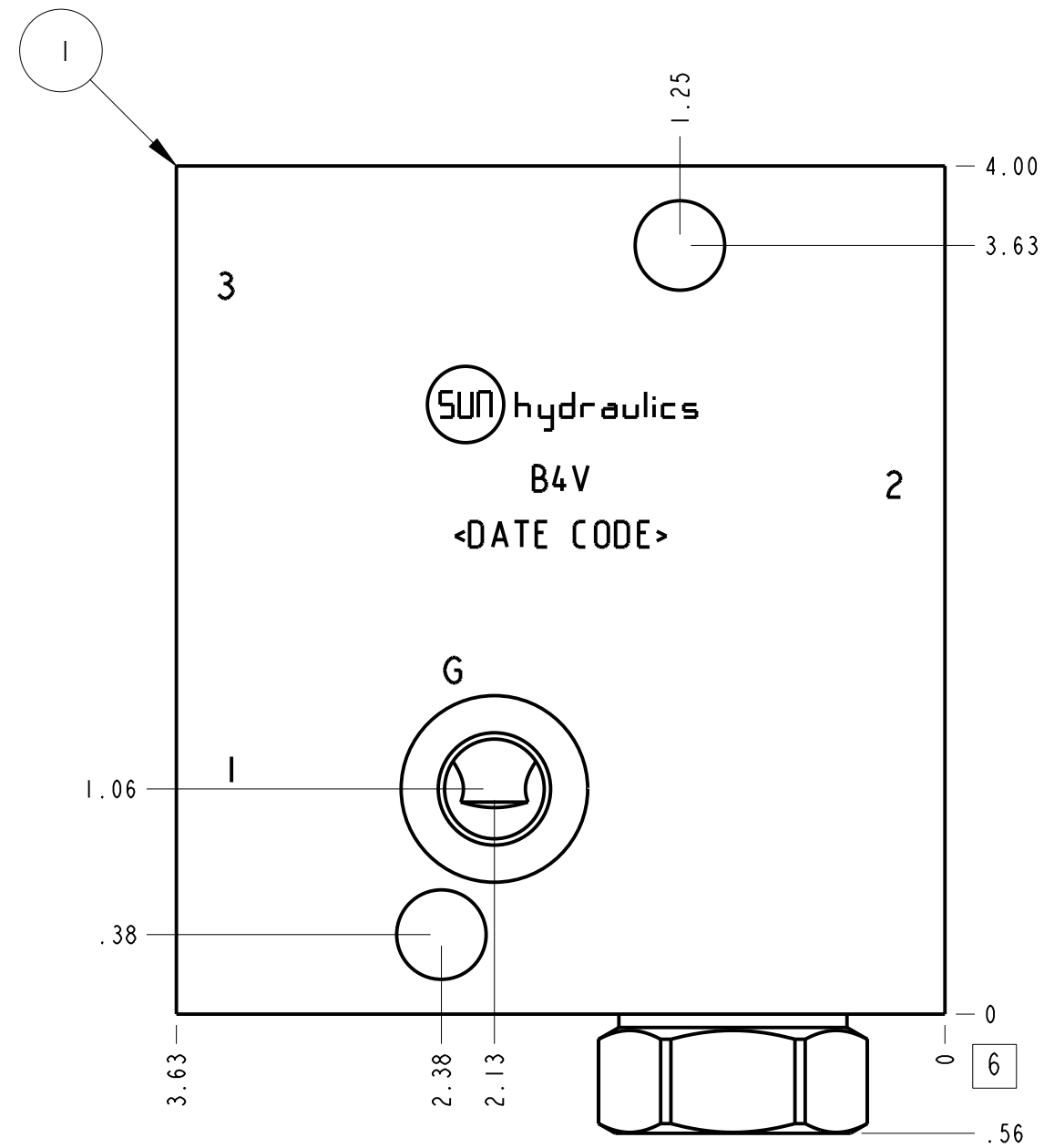
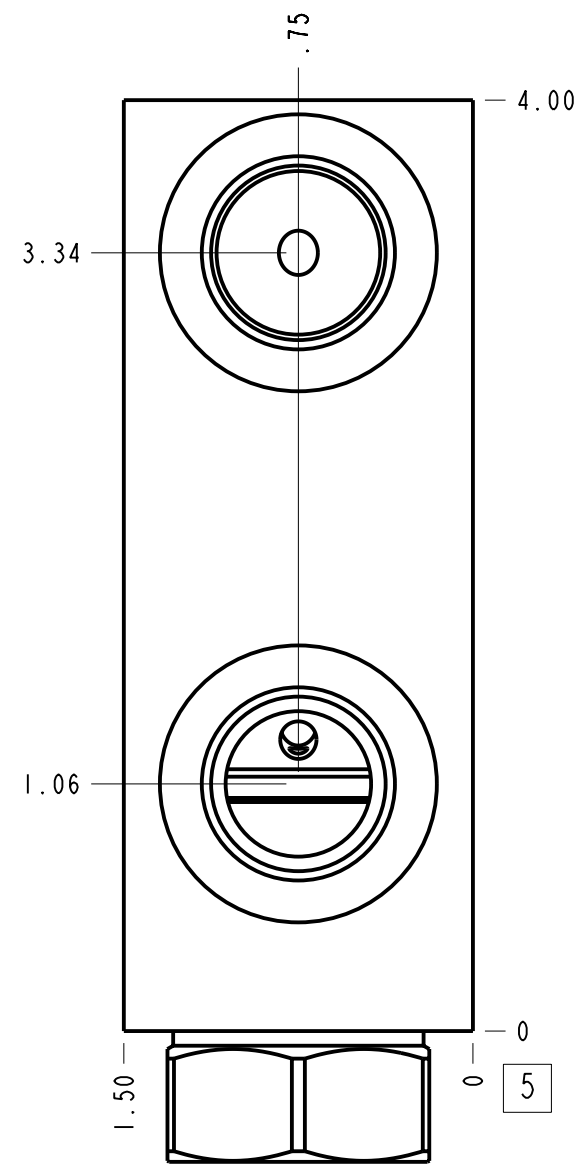
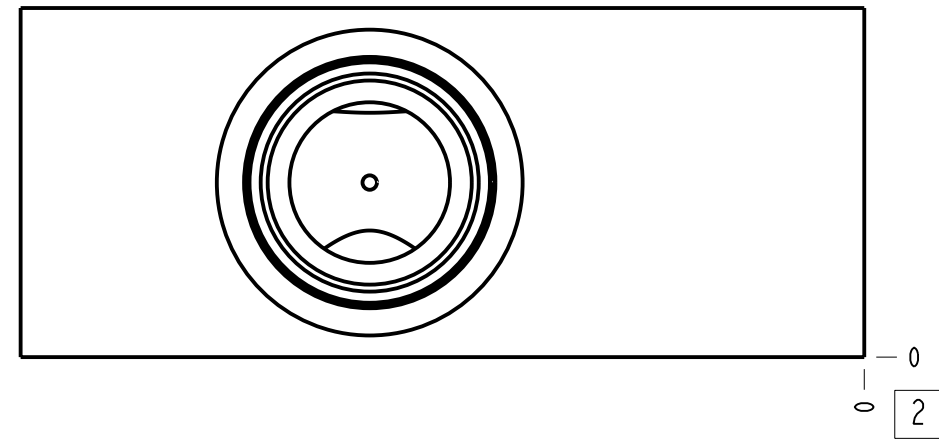


Technical Data	U.S. Units	Metric Units
Cavity	T-2A	
Body Features	Ninety degree with reverse flow check - reducing	
Body Type	Line mount	
Interface	None	
Open Cavity Quantity	1	
Weight	1.932 lb.	0,876 kg.
Mounting Hole Diameter	.42 in.	10,7 mm
Mounting Hole Depth	Through	
Mounting Hole Quantity	2	
Includes integral cartridge(s)	Yes (see Included Components)	



Notes

- Important: Carefully consider the maximum system pressure. The pressure rating of the manifold is dependent on the manifold material, with the port type/size a secondary consideration. Manifolds constructed of aluminum are not rated for pressures higher than 3000 psi (210 bar), regardless of the port type/size specified.
- This drawing is for reference only. It is generated by an automated process and does not fall under Sun's document control process.

Port Headings		
Product	Port	Size
B4V	Ports 1 & 2	1/2" BSPP
B4V	Port 3	1/2" BSPP
B4V	Gage Port	1/4" BSPP

2	CXED-XCN		CHECK VALVE	1	
1	151-021-008	6061-T6 ALUMINUM	BODY	1	
I T E M	PART NO.	SETTING	MATERIAL	PART NAME	Q T Y

MODEL	B4V	ALL DIMENSIONS IN INCH VIEWS ARE THIRD ANGLE	FIRST ANGLE	THIRD ANGLE	
DESCRIPTION	T-2A Line mount (See Technical Data for Body Features)	DATE	SCALE	DWG SIZE	SHEET
		Nov-19-24	1.212	C	1