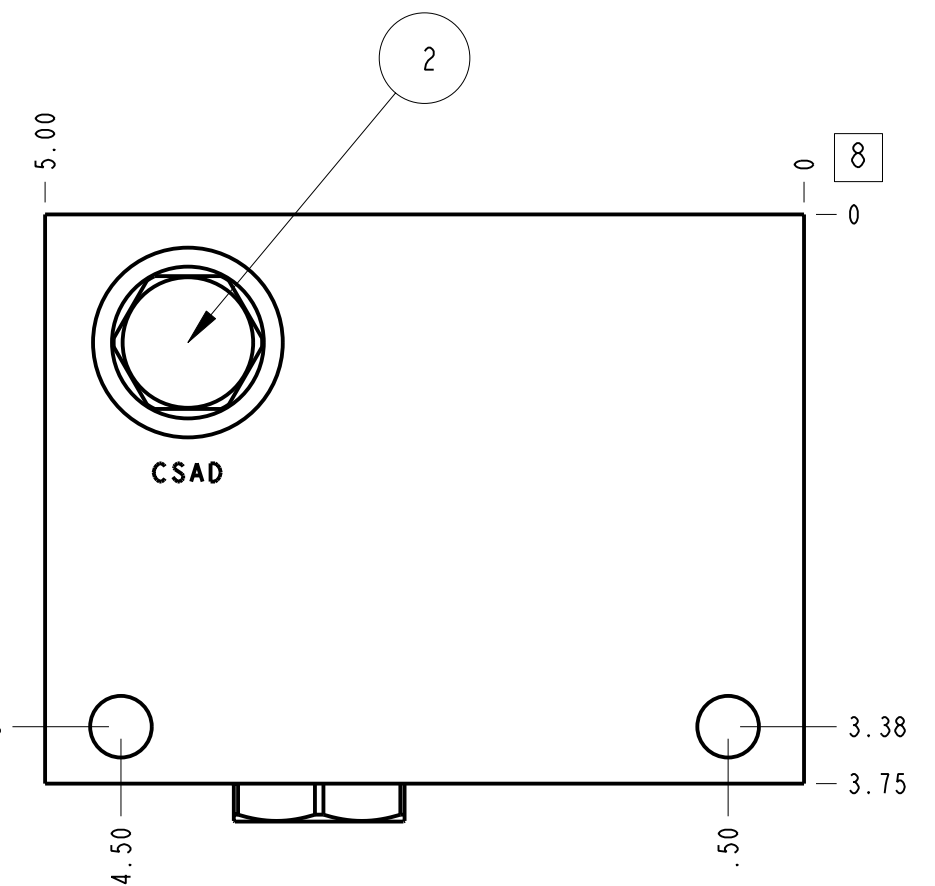
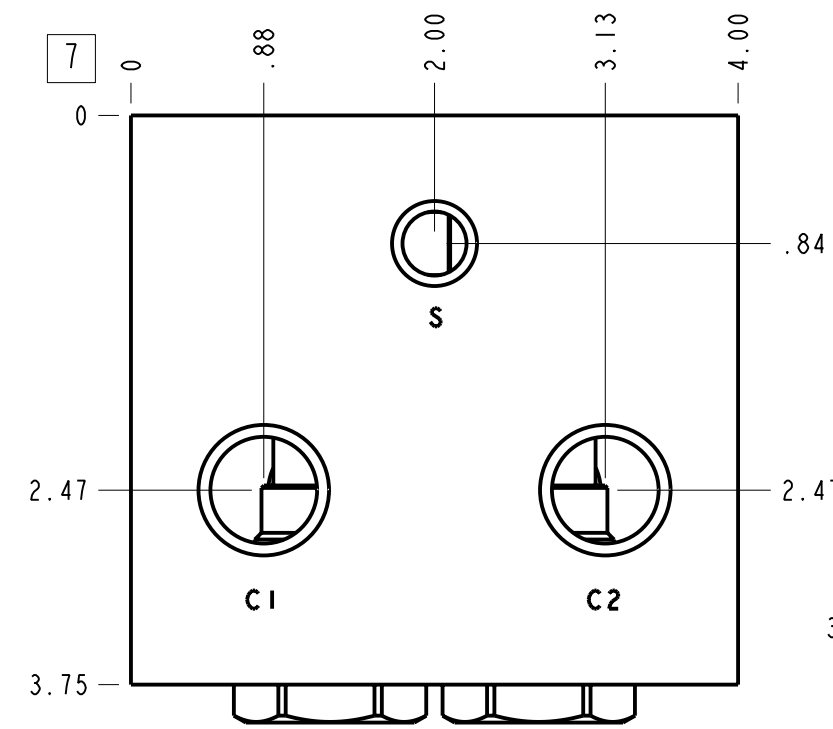
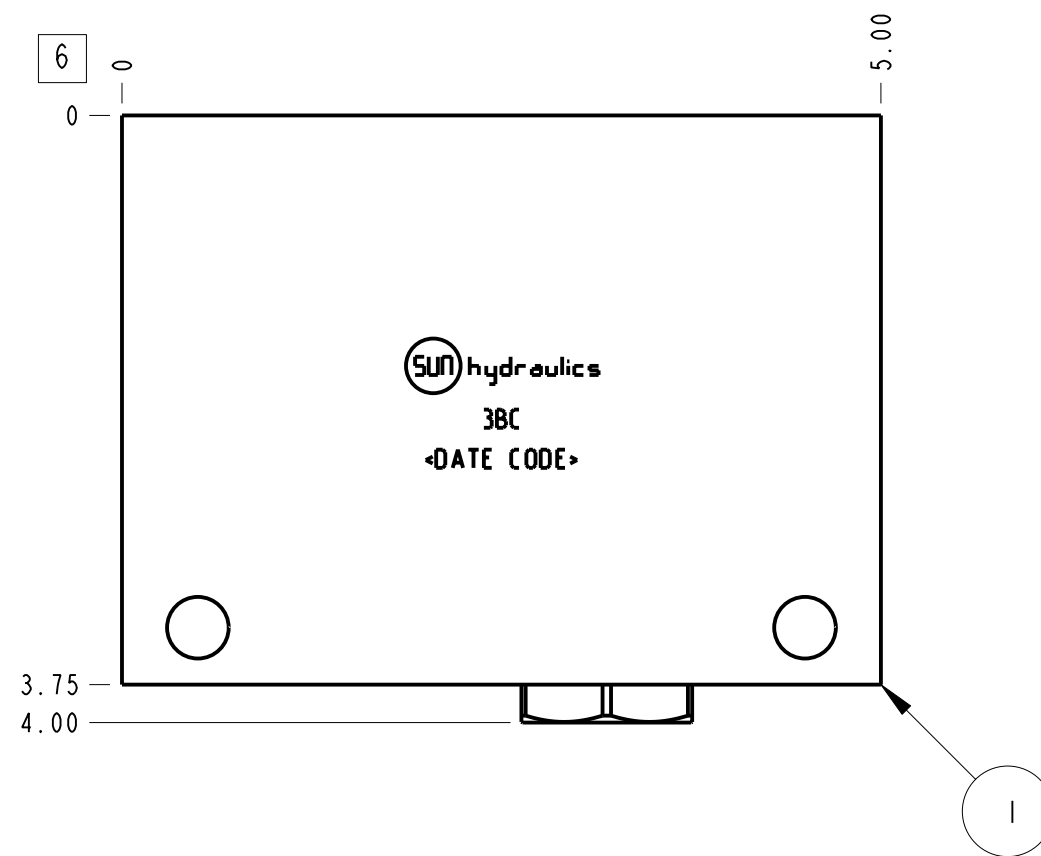
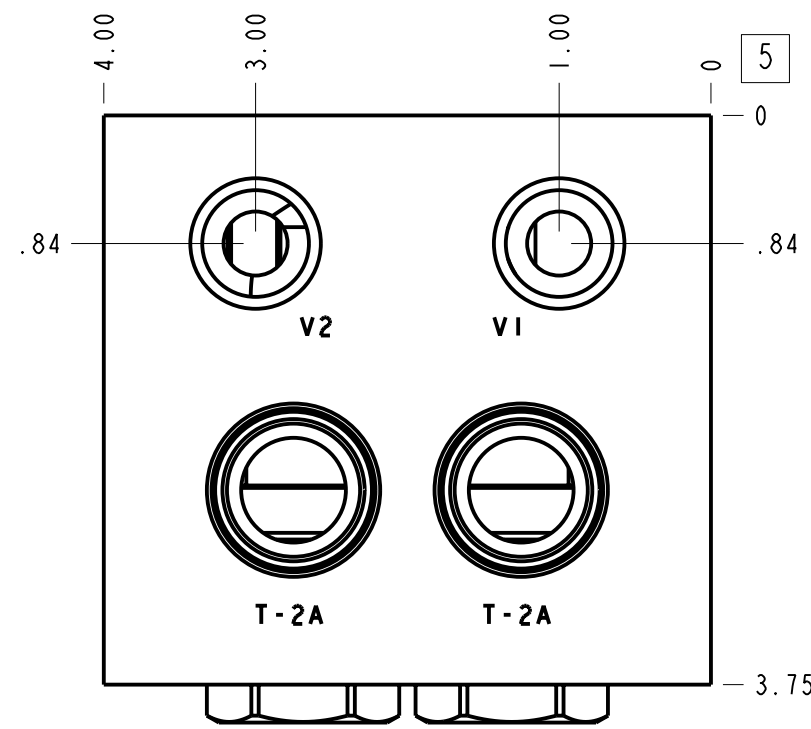
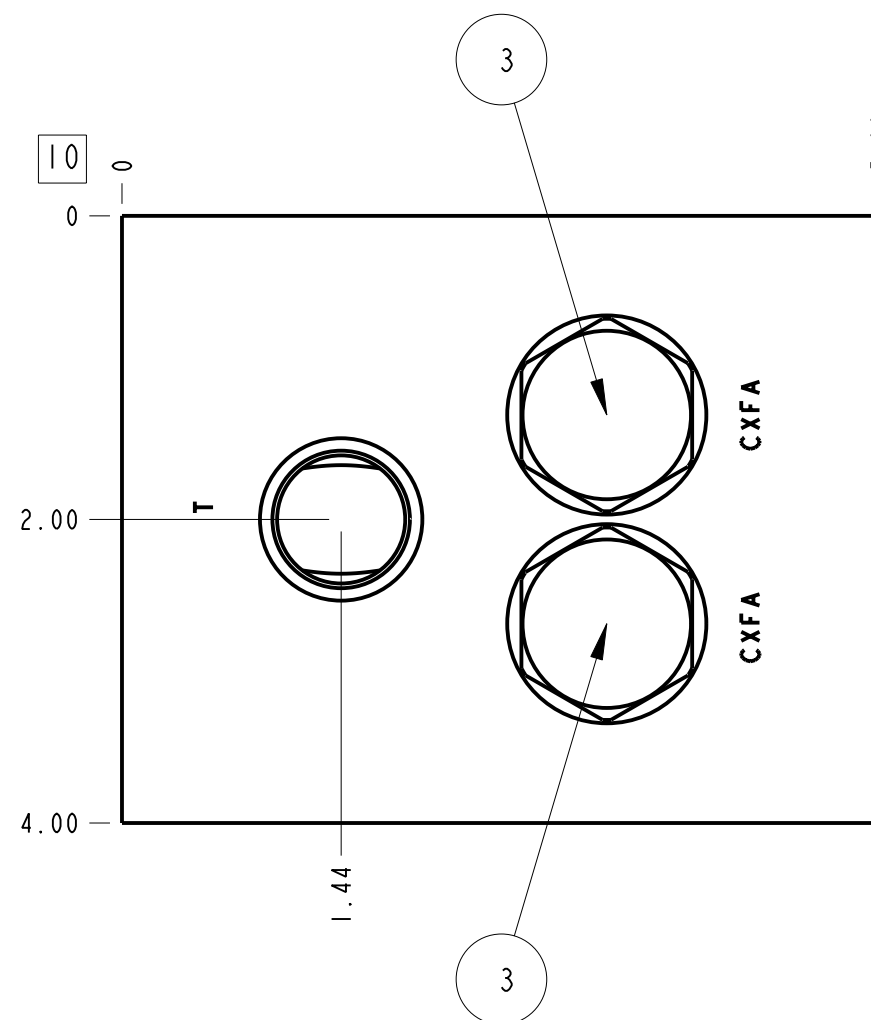


Technical Data	U.S. Units	Metric Units
Cavity	T-2A	
Body Features	Cushion lock with shuttle	
Body Type	Line mount	
Interface	None	
Open Cavity Quantity	2	
Weight	6.836 lb.	3,101 kg.
Mounting Hole Diameter	.41 in.	10,4 mm
Mounting Hole Depth	Through	
Mounting Hole Quantity	2	
Includes integral cartridge(s)	Yes (see Included Components)	



Notes

- Important: Carefully consider the maximum system pressure. The pressure rating of the manifold is dependent on the manifold material, with the port type/size a secondary consideration. Manifolds constructed of aluminum are not rated for pressures higher than 3000 psi (210 bar), regardless of the port type/size specified.
- This drawing is for reference only. It is generated by an automated process and does not fall under Sun's document control process.



Port Headings		
Product	Port	Size
3BC	Ports C1,C2,V1,V2	1/2" NPTF
3BC	Port S	1/4" NPTF
3BC	Port T	3/4" NPTF

3	CXFA-XCN		CHECK VALVE	2		
2	CSAD-XXN		SHUTTLE VALVE	1		
1	153-440-001	6061-T6 ALUMINUM	BODY	1		
ITEM	PART NO.	SETTING	MATERIAL	PART NAME	QTY	
	MODEL		3BC	ALL DIMENSIONS IN INCH VIEWS ARE THIRD ANGLE		
DESCRIPTION		T-2A Line mount Cushion lock with shuttle	DATE	SCALE	DWG SIZE	SHEET
		Jul-16-24	0.791	C	1	

